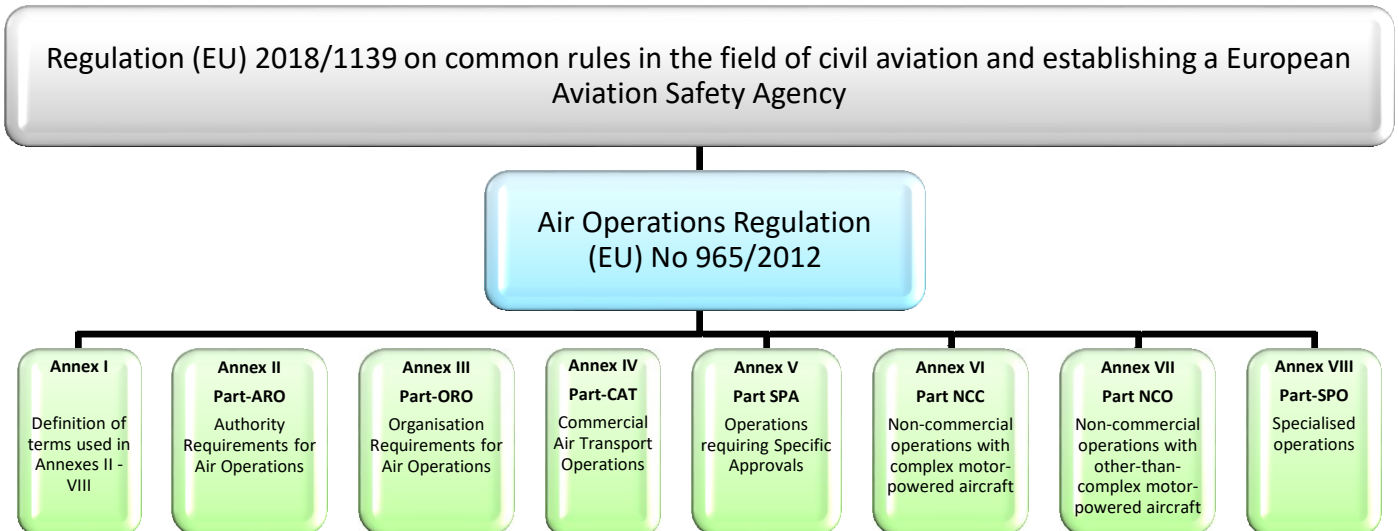
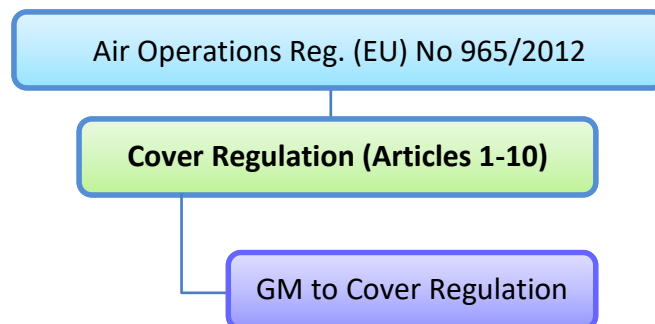


## Regulation on Air Operations – Structure

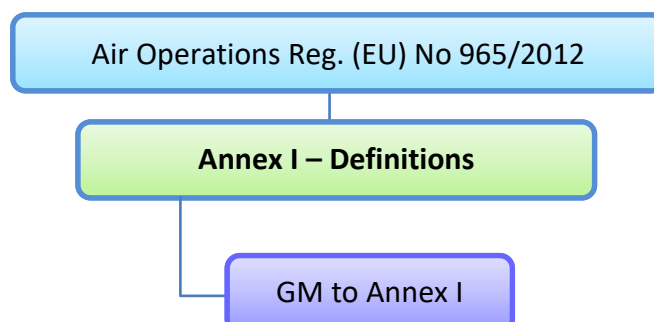
Regulation (EU) No 965/2012 on Air Operations contains eight Annexes. The diagrams below illustrate the contents of each Annex. The contents of the Annexes are available via the [Regulations](#) page.



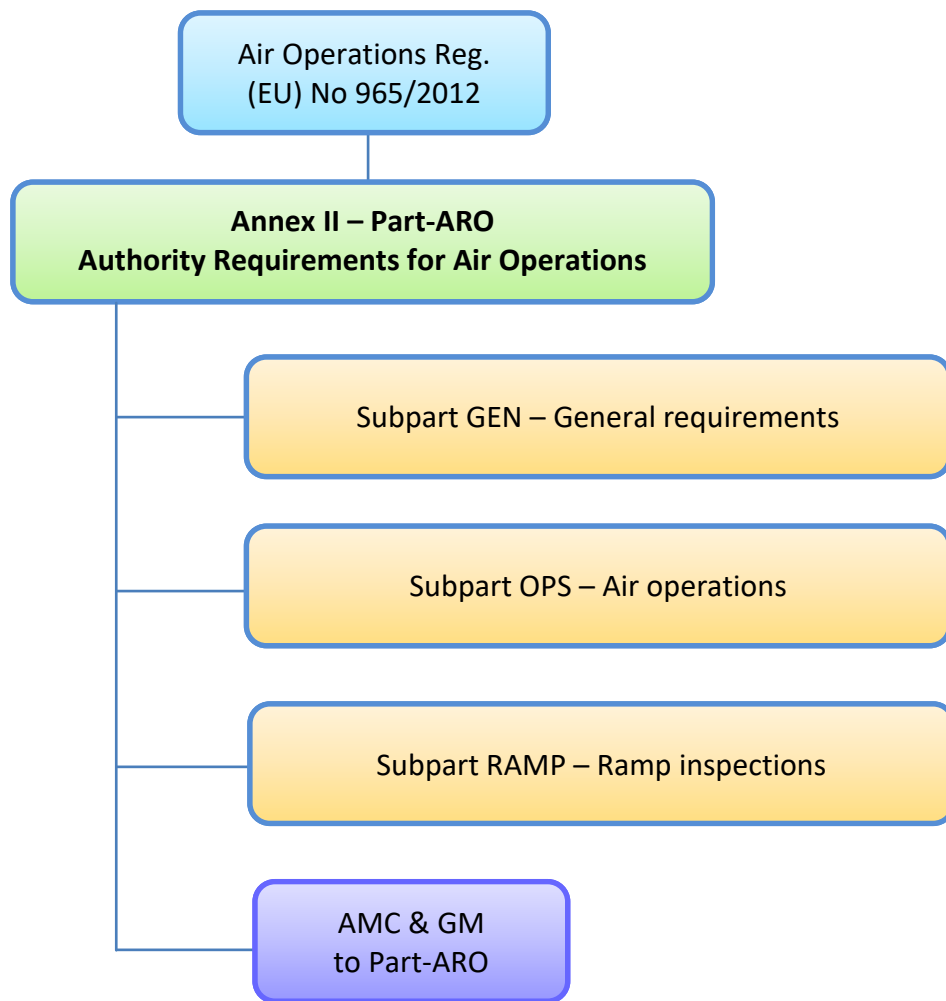
### Articles 1 to 10 – ‘Cover Regulation’



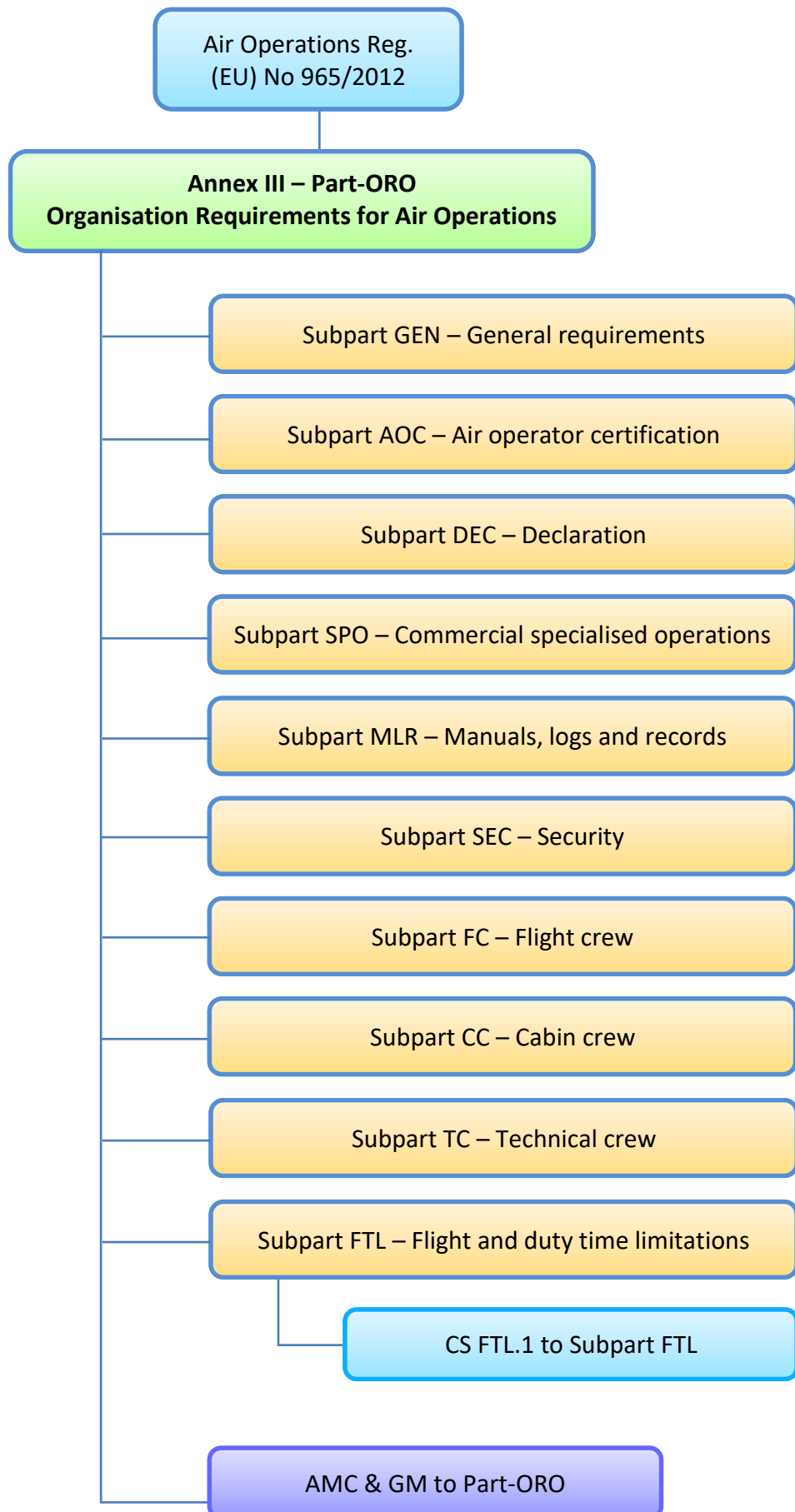
### Annex I – Definitions for terms used in Annexes II to VII



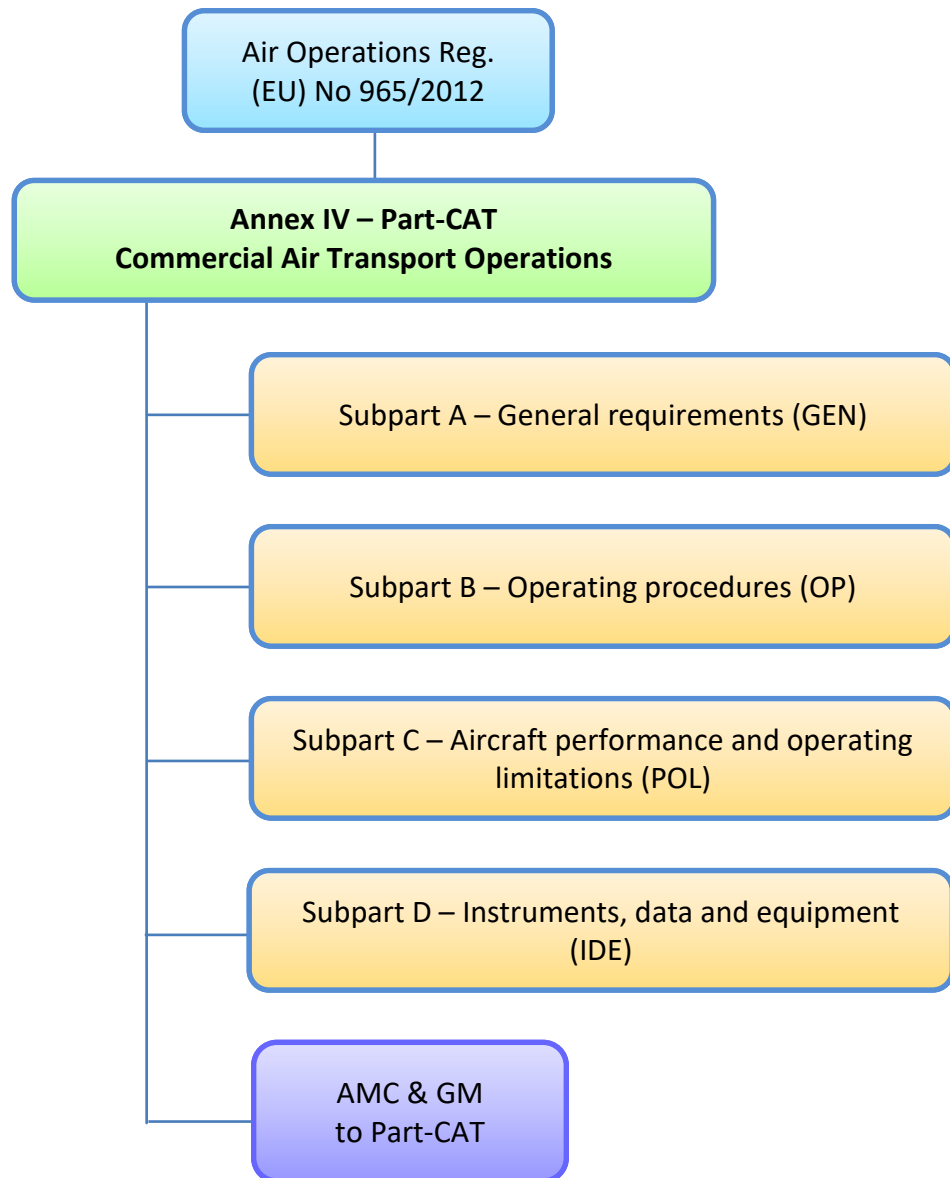
## Annex I – Part-ARO – Authority requirements for air operations



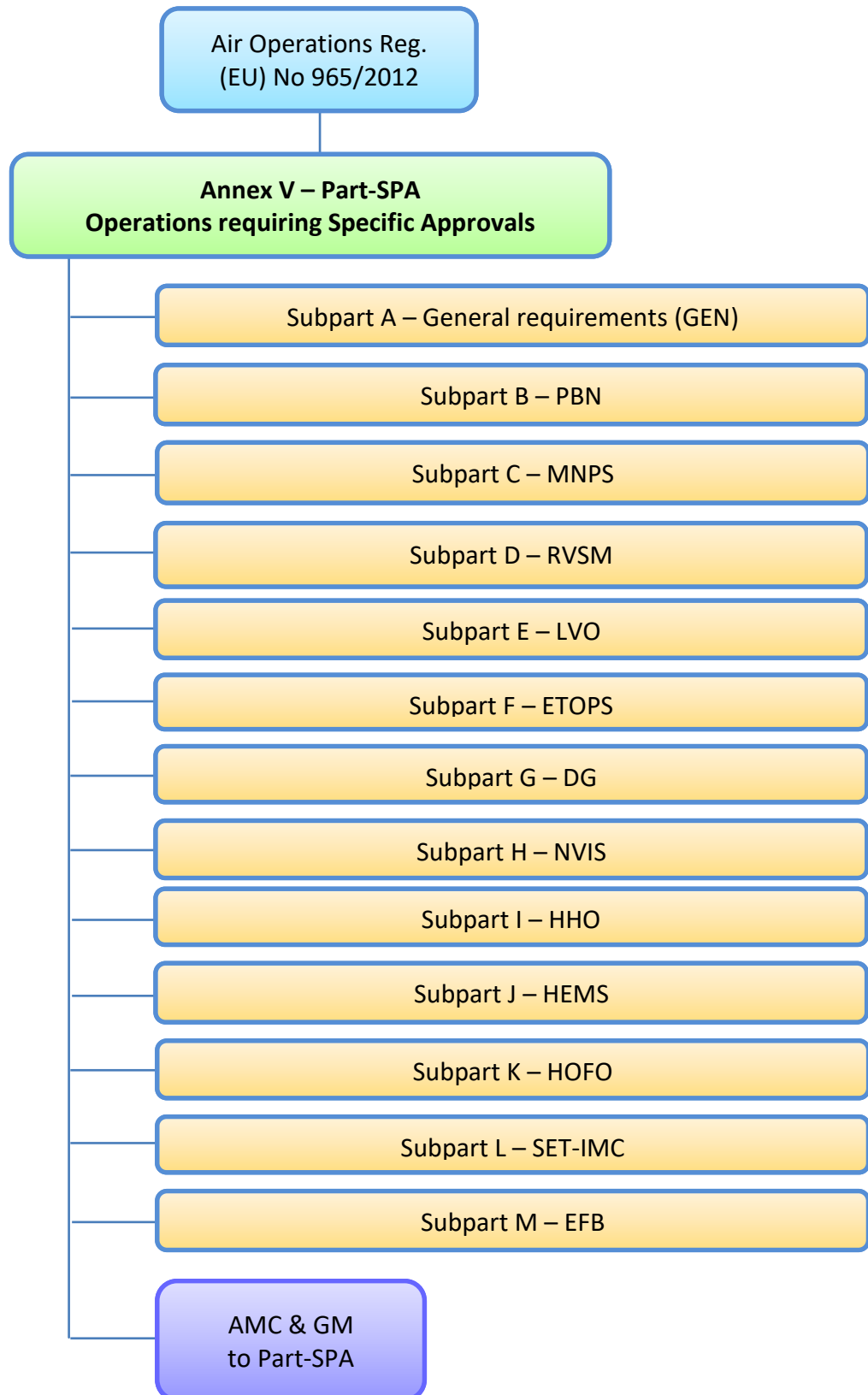
## Annex III – Part-ORO – Organisation requirements for air operations



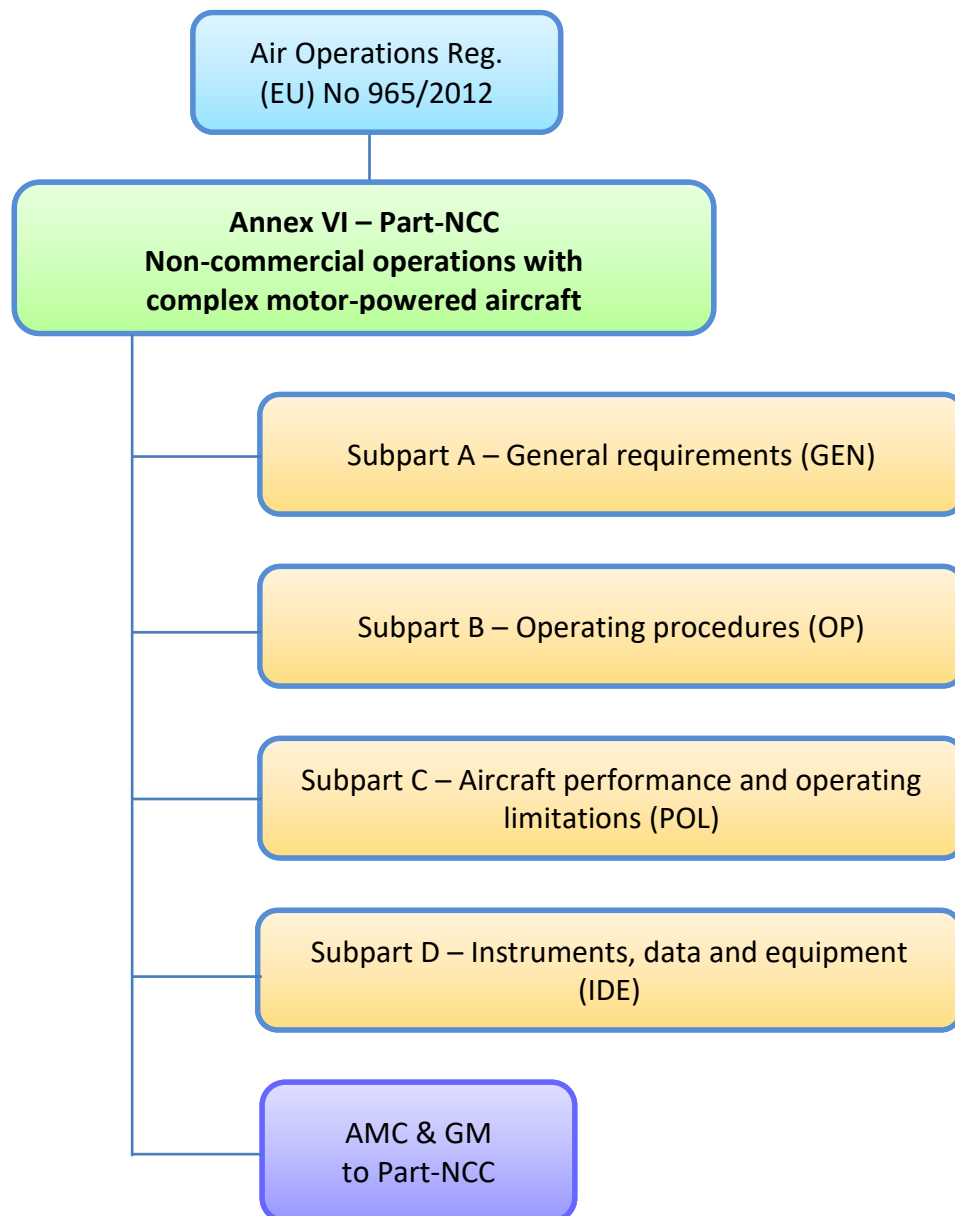
## Annex IV – Part-CAT – Commercial air transport operations



## Annex V – Part-SPA – Operations requiring specific approvals



## Annex VI – Part-NCC – Non-Commercial operations with complex motor-powered aircraft\*



\* Complex motor-powered aircraft is defined in Article 3 of Regulation (EC) No 216/2008:

“(i) an aeroplane:

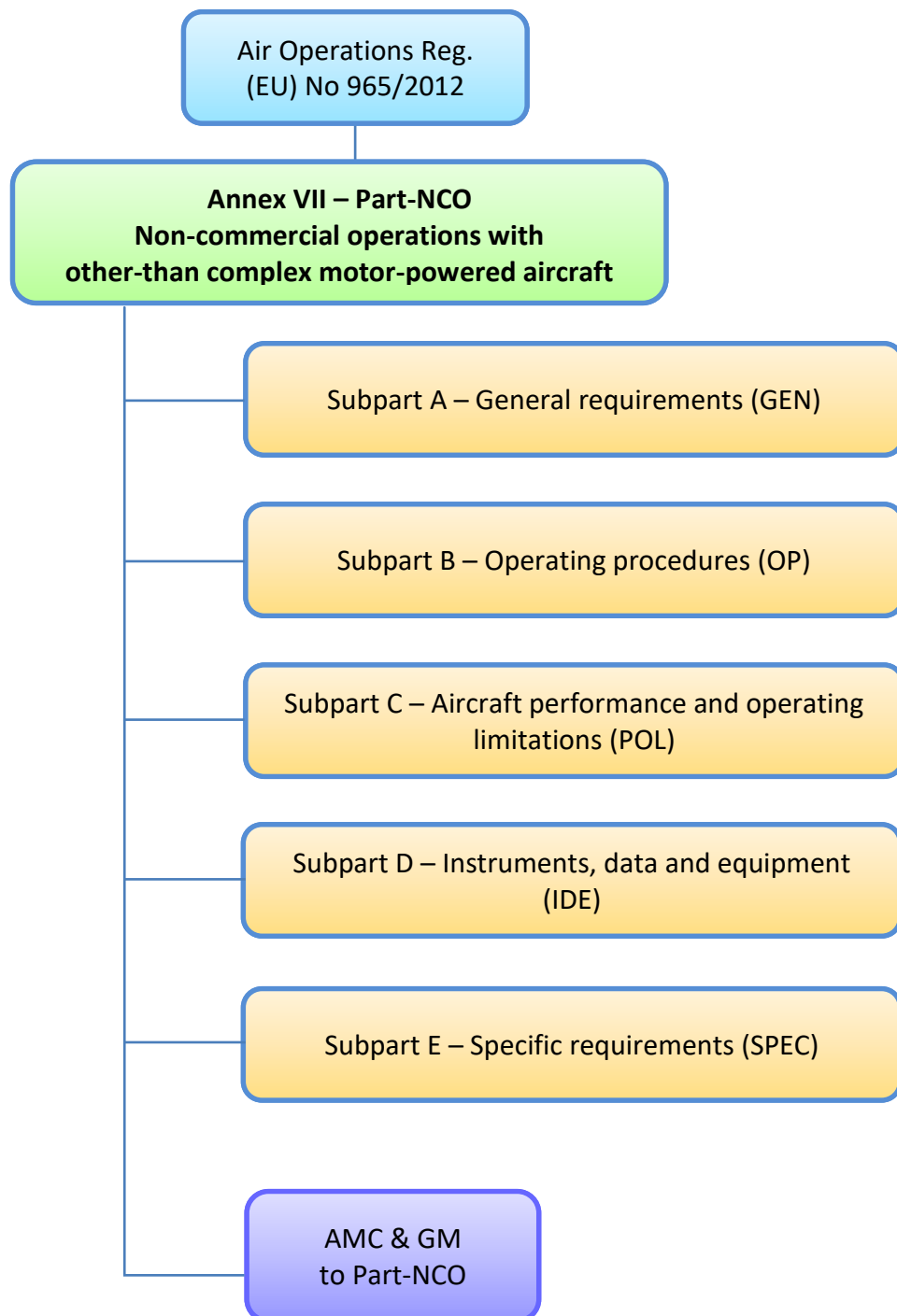
- with a maximum certificated take-off mass exceeding 5 700 kg, or
- certificated for a maximum passenger seating configuration of more than nineteen, or
- certificated for operation with a minimum crew of at least two pilots, or
- equipped with (a) turbojet engine(s) or more than one turboprop engine, or

(ii) a helicopter certificated:

- for a maximum take-off mass exceeding 3 175 kg, or
- for a maximum passenger seating configuration of more than nine, or
- for operation with a minimum crew of at least two pilots, or

(iii) a tilt rotor aircraft.”

## Annex VII – Part-NCO – Non-Commercial operations with other-than complex motor-powered aircraft



## Annex VIII – Part-SPO – Specialised operations

